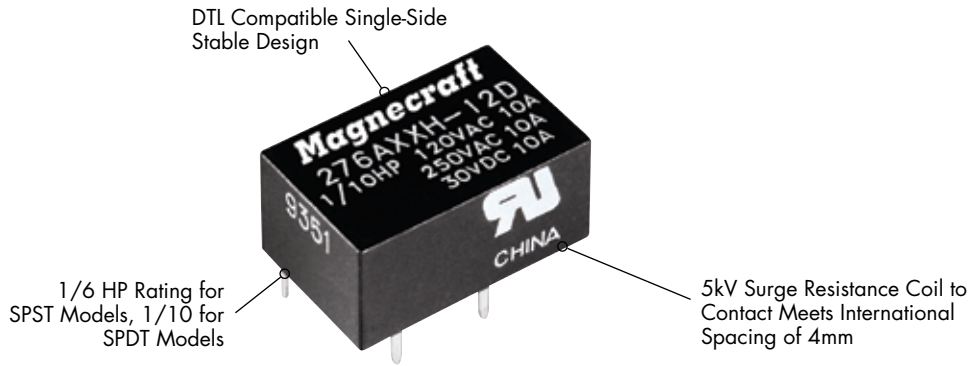
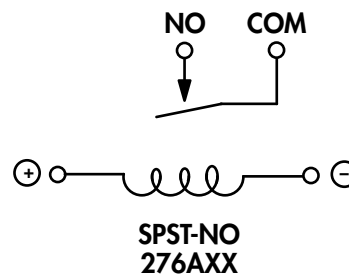
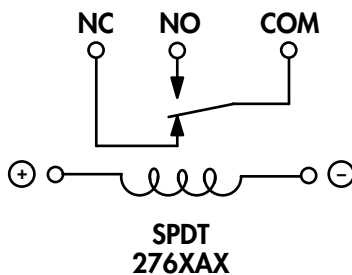


## 276 Low Profile PCB Mount Power Relay/SPST and SPDT 7 - 10 Amp Rated



General Specifications (UL 508)			276XAX	276AXX
Contact Characteristics		Units	7 Amp	10 Amp
Number and type of Contacts			SPDT	SPST-NO
Contact materials			Silver Alloy	Silver Alloy
Current rating		A	7	10
Switching voltage		V	240 50/60 Hz	240 50/60 Hz
		V	30	30
		HP	1/10 @ 120VAC	1/6 @ 120VAC
Minimum Switching Requirement	Minimum	mA	100	100
Coil Characteristics				
Voltage Range		V	3...24	3...24
Operating Range		%	80% to 110%	80% to 110%
Average consumption	% of Nominal	W	0.2	0.2
Drop-out voltage threshold		%	10%	10%
Performance Characteristics				
Electrical Life	Operations @ Rated Current (Resistive)		100,000	100,000
Mechanical Life	Unpowered		5,000,000	5,000,000
Operating time (response time)		ms	10	10
Dielectric	Between coil and contact	V	2000	2000
	Between contacts	V	1000	1000
Environment				
Product certifications	Standard version		UL	UL
Ambient air temperature around the device	Storage	°C	-40...+85	-40...+85
	Operation	°C	-40...+55	-40...+55
Vibration resistance	Operational	g-n	3, 10-55 Hz	3, 10-55 Hz
Shock resistance		g-n	20	20
Weight		grams	5.5	5.5

### WIRING DIAGRAMS TOP VIEW





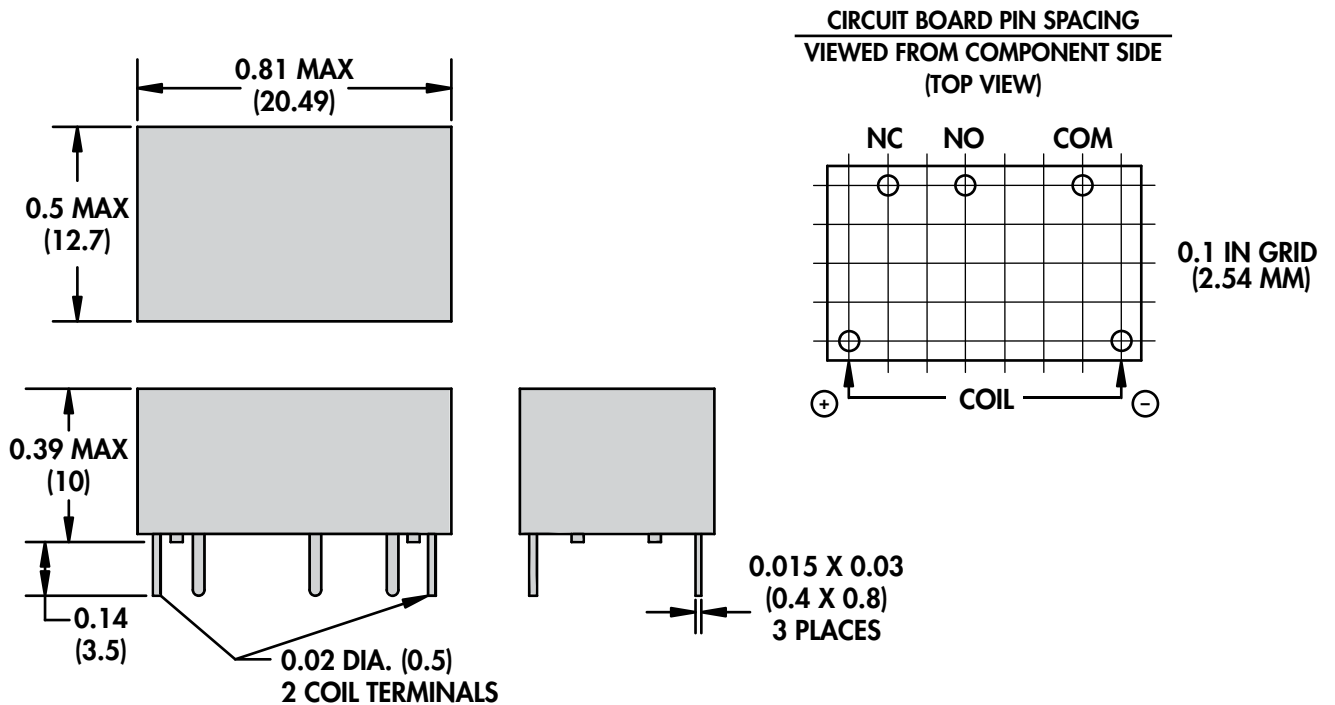
**Standard Part Numbers**

**BOLD-FACED PART NUMBERS ARE NORMALLY STOCKED**

Nominal Input Voltage	Nominal Coil Resistance ( $\Omega$ )	Part Number	Contact Configuration
5 VDC	125 $\Omega$	<b>276AXXH-5D</b>	SPST-NO
6 VDC	180 $\Omega$	276AXXH-6D	SPST-NO
12 VDC	720 $\Omega$	<b>276AXXH-12D</b>	SPST-NO
24 VDC	2880 $\Omega$	276AXXH-24D	SPST-NO
5 VDC	125 $\Omega$	<b>276XAXH-5D</b>	SPDT
6 VDC	180 $\Omega$	<b>276XAXH-6D</b>	SPDT
12 VDC	720 $\Omega$	<b>276XAXH-12D</b>	SPDT
24 VDC	2880 $\Omega$	<b>276XAXH-24D</b>	SPDT

**Part Number Builder**

Series	Contact Configuration	Type of Seal	Coil Voltage	Current Type
276	XAX	H	-12	D
276	AXX = SPST - NO XAX = SPDT	H = Epoxy Sealed	5 = 5VDC 6 = 6VDC 12 = 12VDC 24 = 24VDC	D = DC Coil



DRAWING AND PIN SPACING ENLARGED TO 200% OF ACTUAL SIZE